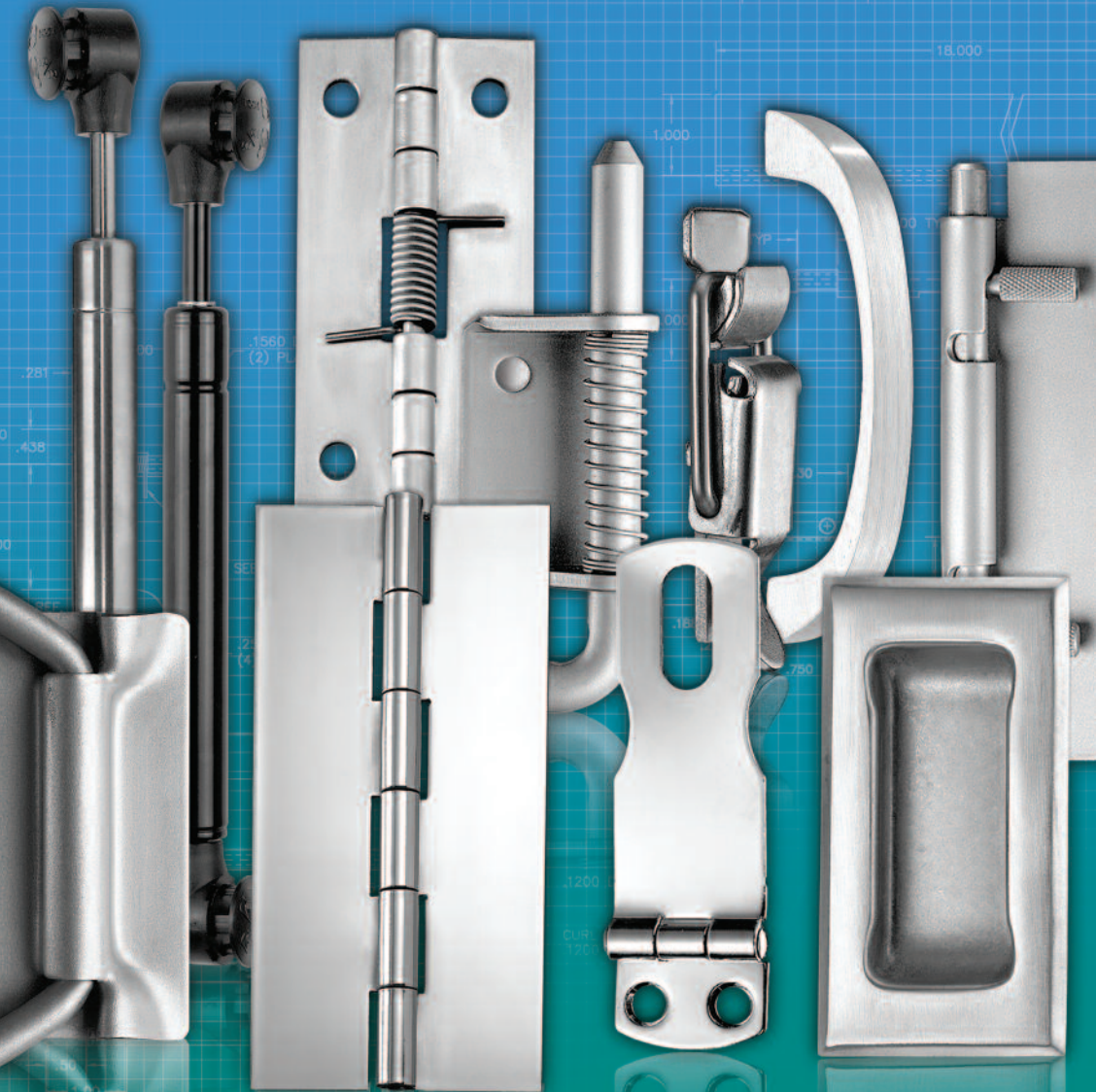


TOTAL CABINET HARDWARE SOLUTIONS
HINGES CATCHES GAS SPRINGS HANDLES
INDUSTRIAL AND MEDICAL

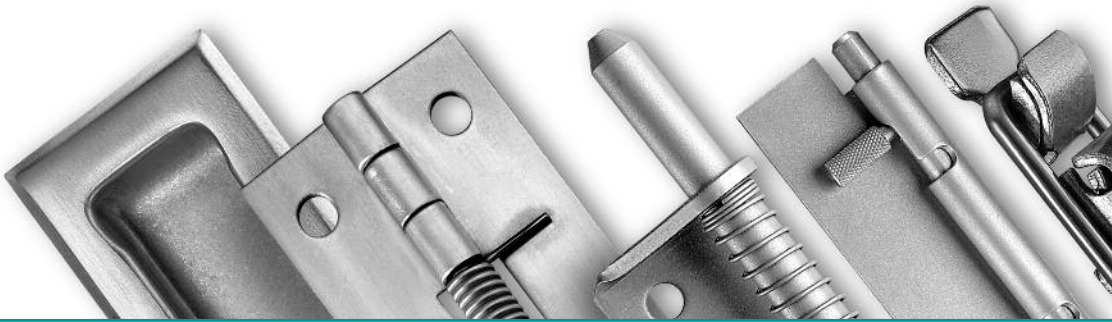


GUDEN
HARDWARE FOR INDUSTRY

H.A. Guden Co., Inc.
www.guden.com • 800 3-HINGES

Supplying Hinges and

Building on over four generations of hinge expertise,



CONTENTS

- | | |
|-------------------|-------------------------------------|
| 1 | <i>Introduction</i> |
| 2 | <i>Hinge Terminology</i> |
| 3 | <i>Hinges</i> |
| 13 | <i>Handles & Pulls</i> |
| 17 | <i>Catches & Supports</i> |
| 21 | <i>Gas Springs & Dampers</i> |
| Back Cover | <i>Sales Terms & Conditions</i> |

Tap Into A Full Selection of Ready-to-Ship Products

To meet all your hardware needs, we stock an enormous supply of products in a wide variety of materials and finishes. And with our automated inventory management and product replenishment systems, we can accommodate demanding schedules and delivery requirements.

The Assurance Of An ISO 9001 Quality System

With our ISO 9001 compliant system, you know that our quality will always be at its highest. It's your assurance that our products will meet your exact specifications.

Hardware for Industry

we support all your cabinet, lid, and door solutions.



The Personal Service You Deserve

From online web help to expert telephone support, from e-mail to fax response, a Guden representative will always be available to help you.

Do you have a project that requires custom hardware assistance? Please provide us with a drawing of the custom hardware you are looking for and one of our friendly and knowledgeable customer service representatives will contact you as quickly as possible. We will review your drawing and supply the part to print or supply a Guden stock product that may meet your requirements.

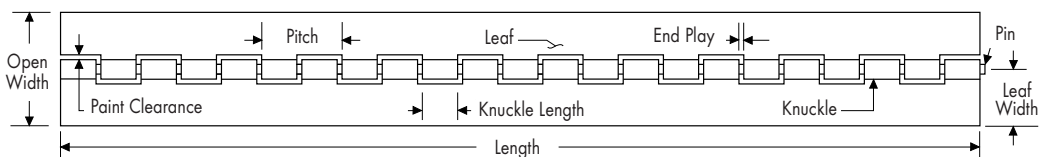


GUDEN
HARDWARE FOR INDUSTRY

H.A. Guden Co., Inc.

800-3-HINGES • FAX 631-737-2933 • WWW.GUDEN.COM

HINGE TERMINOLOGY



SWAGING



Fig. 1

Hinge with both leaves not swaged - our "plain" or standard assembly



Fig. 2

Hinge with both leaves half swaged



Fig. 3

Hinge with one leaf half swaged



Fig. 4

Hinge with one leaf full swaged



Fig. 5

Swage for reverse assembly

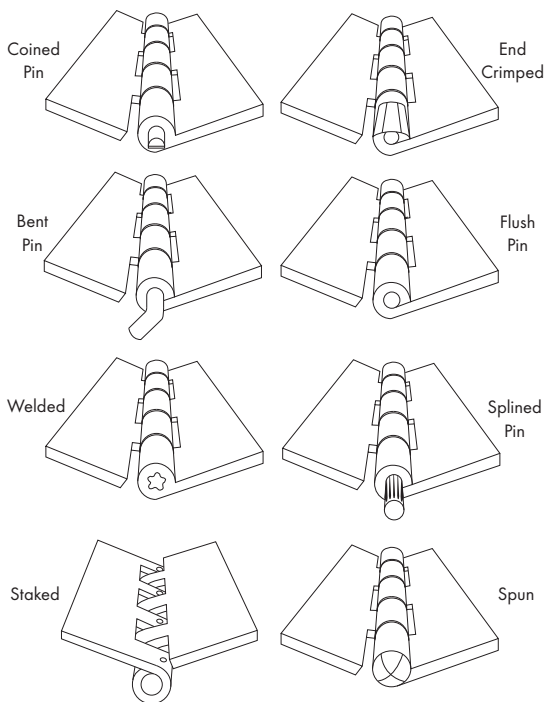


Fig. 6

Reverse assembly

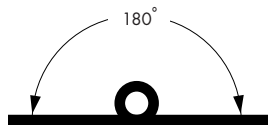
PIN

The pin or rod that holds hinge leaves together may be furnished in several ways depending on the application. Some pins are easily removed; others are permanently mounted. Several variations are illustrated here.



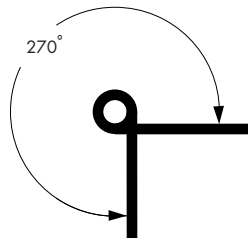
Closed

Leaves are parallel, together and at the 0° position.



Flat

Leaves are parallel, and at the 180° position.

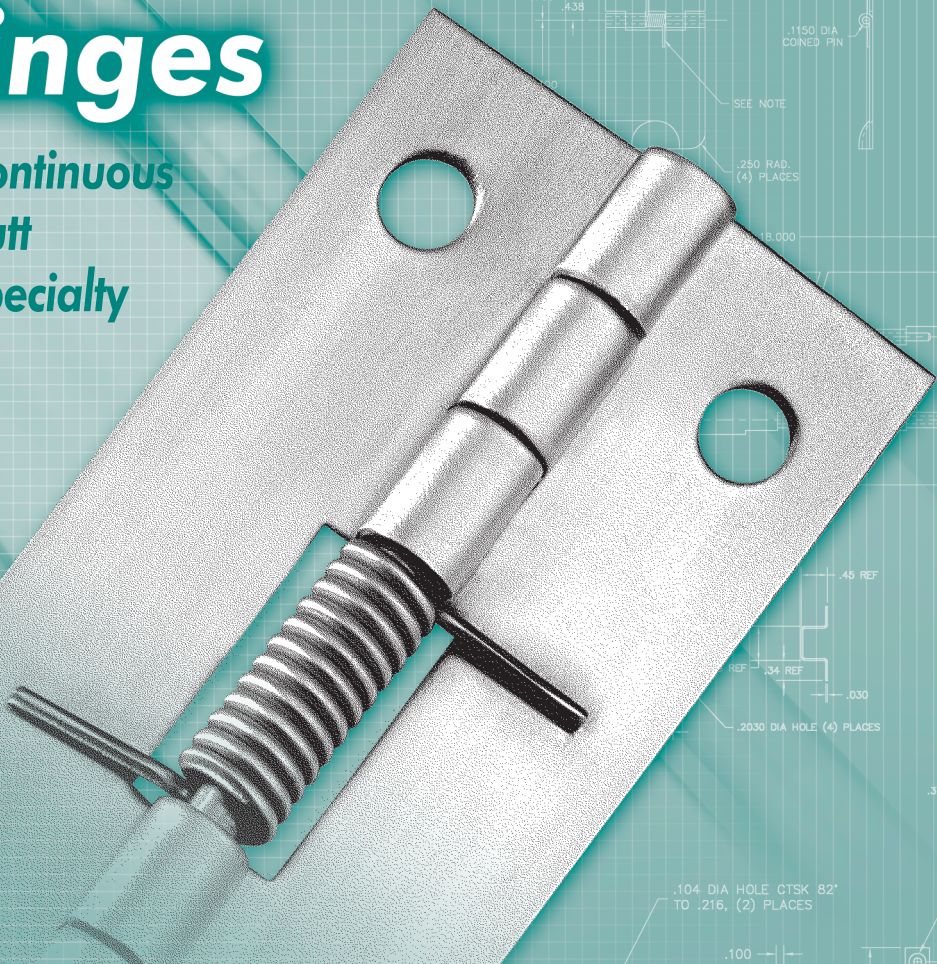


Open (or Back Angle)

Leaves are opened through the maximum arc, usually about 270°. This varies from series to series and can be adjusted for special applications.

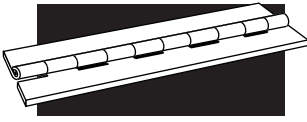
Hinges

- > Continuous
- > Butt
- > Specialty



CONTENTS

<p>4 Continuous Hinges</p> <p style="padding-left: 20px;">316 STS Hinges</p> <p style="padding-left: 20px;">Electrogalvanized Hinges</p> <p style="padding-left: 20px;">Polished Stainless w/holes</p> <p style="padding-left: 20px;">Preplated Steel w/holes</p> <p style="padding-left: 20px;">Military Hinges</p>	<p>7 Butt Hinges</p> <p>8 Weld-on Hinges</p> <p>9 Concealed Hinges</p> <p>9 Latch Hinges</p> <p>10 Un-Hinges</p>	<p>10 Invisible Hinges</p> <p>11 Slip Joint Hinges</p> <p>11 Flag Hinges</p> <p>12 Spring Hinges</p> <p>12 Cover Hinges</p>
---	---	--



CONTINUOUS HINGES

Guden's continuous hinges are available in approximately 140 stock sizes, see chart below. Custom lengths are available.



STAINLESS, STEEL, AND ALUMINUM

Available in stainless steel leaf & pin, steel leaf & pin, aluminum with aluminum pin and aluminum with stainless steel pin, and in some cases a steel leaf with brass pin.

Leaf Thickness	Pin Dia.	Knuckle Length	Length	Open Width												
				.50	.75	1.00	1.06	1.25	1.50	2.00	2.50	3.00	4.00	5.00	6.00	
.025	.062	.25	72		•	•			•	•						
		.50	72	•	•											
.032	.062	.50	72		•	•	•	•	•							
		.25	72		•		•	•	•							
.035	.086	.25	72		•		•	•	•	•						
.040	.091	.50	72				•	•	•	•	•		•			
		.091	.625	72.5				•	•	•	•					
.050	.120	.50	72				•	•	•	•	•	•	•	•		
		.625	85				•	•	•	•	•	•	•	•		
.060	.120	.50	84				•	•	•	•	•	•	•	•		
		.625	85				•	•	•	•	•	•	•	•		
		.75	72				•	•	•	•	•	•	•	•		
		1.00	84				•	•	•	•	•	•	•	•		
		.187	.625	72.5				•	•	•	•	•	•	•	•	
		1.00	84				•	•	•	•	•	•	•			
		2.00	84				•	•	•	•	•	•	•			
.072	.187	.50	84				•	•	•	•	•	•	•			
.075	.187	2.00	84							•	•	•	•	•		
		.250	1.00	72						•	•	•	•	•	•	
		2.00	84							•	•	•	•	•	•	•
.090	.187	2.00	72							•	•	•	•	•	•	•
		.250	1.00	72						•	•	•	•	•	•	•
		2.00	84							•	•	•	•	•	•	•
.120	.250	2.00	72							•	•	•	•	•	•	•
		.375	2.00	84						•	•	•	•	•	•	•
.179	5.00	2.00	96									•		•		
.250	.625	1.50	72									•		•		

Please visit guden.com for precise availability of parts, dimensions, materials, 2D drawings and 3D CAD models, and associated part numbers.

TYPE 316 STAINLESS STEEL

Leaf Thickness	Pin Dia.	Knuckle Length	Length	Open Width					
				1.06	1.25	1.50	2.00	2.50	3.00
.040	.091	.50	72	•	•	•	•		
.060	.120	.50	72			•	•	•	•

STEEL / ELECTROGALVANIZED

Leaf Thickness	Pin Dia.	Knuckle Length	Length	Open Width					
				1.06	1.25	1.50	2.00	2.50	3.00
.042	.091	.50	72			•	•		
.060	.120	.50	72			•	•		•

POLISHED STAINLESS WITH HOLES – ON 2" CENTERS

Leaf Thickness	Pin Dia.	Knuckle Length	Length	Open Width		Hole Dia #5 ctsk	Open Width			Hole Dia #6 ctsk
				1.06	1.25		1.50	2.00	2.50	
.040	.091	.50	72	•	•	•	•	•		•
.060	.120	.50	72				•	•		•

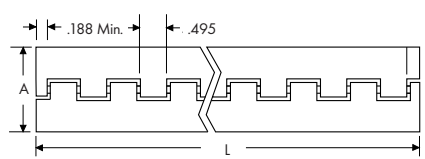
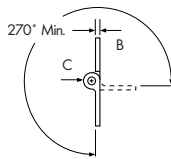
PREPLATED STEEL HINGES WITH HOLES – ON 2" CENTERS

Leaf Thickness	Pin Dia.	Knuckle Length	Length	Open Width		Hole Dia #4 ctsk	Open Width			Hole Dia #6 ctsk
				1.06	1.25		1.50	2.00	2.50	
.040	.091	.50	72	•	•	•	•	•		•

MILITARY CONTINUOUS HINGES

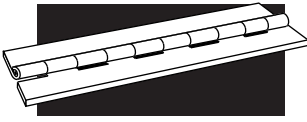
MS-20001 SERIES CONTINUOUS HINGES; TYPE 2024-T3511 EXTRUDED ALUMINUM

Specify	For
P	Anodized per Mil-A-8625, Type II
C	Alodine per Mil-C-5541
A	Aluminum Alloy 7075-T 73511



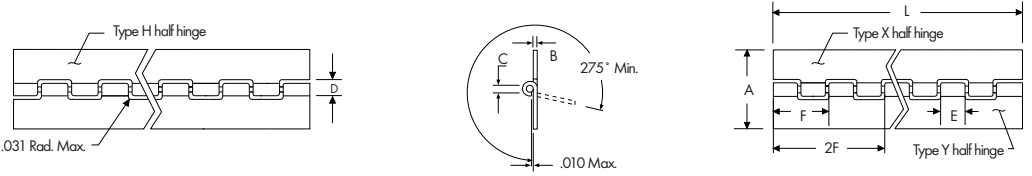
Dash No.	A	B - Leaf Thickness		C
	Open Width	Maximum	Minimum	Pin Diameter
-2	1.062	.056	.044	.090
-3	1.250	.056	.044	.090
-4	1.500	.056	.044	.090
-5	1.750	.056	.044	.090
-6	2.000	.056	.044	.090
-8	2.000	.076	.064	.180
-9	2.500	.056	.044	.090
-10	2.750	.056	.044	.090
-12	3.375	.115	.103	.090
-14	3.719	.163	.149	.129
-16	3.938	.210	.196	.180

Please visit guden.com for precise availability of parts, dimensions, materials, 2D drawings and 3D CAD models, and associated part numbers.



CONTINUOUS HINGES

MILITARY CONTINUOUS HINGES (CONT.)

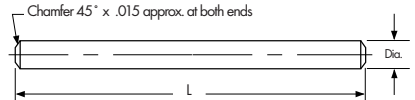


MS-20257 SERIES CONTINUOUS HINGES

Dash No.			A	B Leaf Thickness		C Hole Diameter		D Slot Depth		E	F	Pin Dia. Cor. Res. Steel
Unano- dized	Ano- dized	Cor. Res. Steel	Open Width	Alum. Alloy	Cor. Res. Steel	Alum. Alloy	Cor. Res. Steel	Alum. Alloy	Cor. Res. Steel	Loop	Pitch	
1	P1	C1	.75	.032	.031	.066	.066	.169	.166	.490	1.000	.063
2	P2	C2	1.06	.040	.037	.093	.093	.220	.211	.490	1.000	.090
3	P3	C3	1.25	.040	.050	.093	.121	.220	.278	.490	1.000	.118
4	P4	C4	1.50	.040	.062	.093	.121	.220	.314	.490	1.000	.118
5	P5	C5	2.00	.051	.062	.093	.183	.253	.376	.490	1.000	.180
6	P6	C6	2.00	.064	.062	.183	.183	.382	.376	1.990	4.047	.180

MS-20253* AND A-A-55486 HINGE PINS FOR MS-20257 AND MS-20001 SERIES CONTINUOUS HINGES

Dash No.			Diameter
Cadmium plated	Passivated		
-P1	-1	.062	
-P2	-2	.089	
-P3	-3	.117	
-P4	-4	.179	
-P5	-5	.129	



- Notes: 1. Use cadmium plated, corrosion resistant steel with aluminum alloy hinge.
 2. Use passivated corrosion resistant steel pin with corrosion resistant steel hinge.
 3. Normally supplied 72" long, i.e., MS-20253-72.00.
 4. Add L to the end of the part number to denote solid film lubricant.

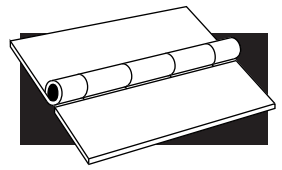
MS-35000 & A-A-55000 SERIES CONTINUOUS HINGES

Length	Leaf		Pin Diameter	Open Width											
	Thickness	Knuckle		.75	1.00	1.06	1.25	1.50	2.00	2.50	3.00	3.50	4.00	5.00	6.00
72	.032	0.5	.063	•	•	•	•	•	•						
	.040	0.5	.091			•	•	•	•						
72.50	.040	.62	.091			•	•	•	•						
	.050	.62	.125			•	•	•	•						
85	.060	.62	.125			•	•	•	•						
84	.060	1.00	.125			•	•	•	•						
			.187			•	•	•	•						
		2.00	.187			•	•	•	•						
	.075	2.00	.187						•	•					
			.250						•	•					
	.090	2.00	.250							•	•				
			.312								•	•		•	•
		.125		.375									•	•	•
	2.00		.312									•	•	•	
			.375									•	•	•	

Materials are available in aluminum, brass leaf & copper pin, stainless steel leaf & pin, plain steel leaf & pin, and plain steel leaf, cadmium plated & brass pin. For A-A-55000 stainless steel leaf & pin materials will be supplied with passivated leaves.

Please visit guden.com for precise availability of parts, dimensions, materials, 2D drawings and 3D CAD models, and associated part numbers.

BUTT HINGES



STAINLESS STEEL - SERIES 7000, 8000

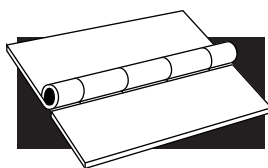
Length	Leaf Thickness	Pin Diameter	Open Width									
			1.06	1.50	2.00	2.50	3.00	4.00	5.00	6.00		
1.00	.035	.035	•									
1.50	.035	.086		•								
	.050	.120		•								
2.00	.060	.120			•							
	.078	.187			•							
2.50	.060	1.20				•						
	.078	.187				•						
3.00	.060	.120					•					
	.078	.187					•					
	.090	.187					•					
	.090	2.50					•					
4.00	.120	2.50					•					
	.078	.187						•				
	.120	.250						•				
5.00	.120	.375							•			
	.120	.250								•		
6.00	.120	.250									•	
	.165	.375										•



PLAIN STEEL - SERIES 3000, 4000, 5000, 6000

Length	Leaf Thickness	Pin Diameter	Open Width										
			.75	1.06	1.31	1.50	2.00	2.50	3.00	3.83	4.00	5.00	6.00
.75	.035	.086	•										
1.00	.035	.086		•									
1.25	.035	.086		•									
	.035	.086		•		•							
	.050	.120			•	•							
1.50	.055	.120				•							
	.035	.086		•		•	•						
	.060	.120				•	•						
2.00	.078	.187					•						
	.060	.120					•	•					
	.078	.187					•						
2.50	.060	.120				•			•				
	.075	.187							•				
	.078	.187							•				
	.120	.250							•				
3.00	.060	.120								•			
	.078	.187								•			
	.090	.250								•			
	.120	.250								•			
4.00	.078	.187									•		
	.090	.250									•		
	.120	.250									•		
5.00	.120	.250										•	
	.120	.250											•
6.00	.120	.250											•
	.187	.500											•

Please visit guden.com for precise availability of parts, dimensions, materials, 2D drawings and 3D CAD models, and associated part numbers.



BUTT HINGES

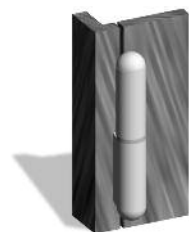
TYPE 316 STAINLESS STEEL — SERIES 2000

Length	Leaf Thickness	Pin Diameter	Open Width		
			2.00	3.00	4.00
2.00	.075	1.87	•		
3.00	.090	1.87		•	
3.00	.120	2.50		•	
4.00	.120	2.50			•

ALUMINUM — SERIES 9000

Length	Leaf Thickness	Pin Diameter	Open Width						
			1.06	1.50	2.00	2.50	3.00	4.00	
1.00	.040	.080	•						
1.50	.050	.120		•					
2.00	.060	.120			•				
	.078	.187			•				
2.50	.060	.120				•			
	.078	.187				•			
3.00	.060	.120						•	
	.078	.187						•	
	.090	.250						•	
	.120	.250						•	
4.00	.120	.250							•

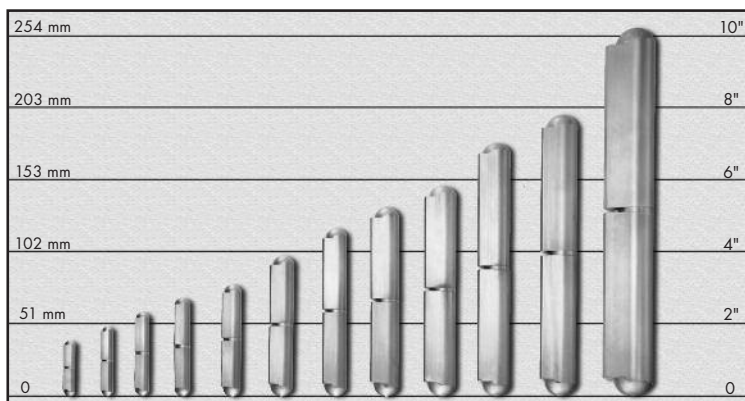
WELD-ON HINGES



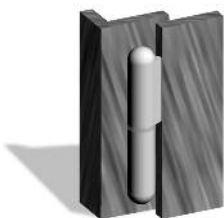
Weld-On Hinges are well suited for flush construction.

The Guden Weld-On Hinge is an attractive alternative for your hinge needs. It offers continuous, smooth operation and eliminates the need for unsightly fasteners and leaves.

The Weld-On Hinge is ideal for a wide range of applications, everything from electrical and tool boxes to machinery doors and air conditioning enclosures.



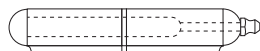
Available in steel w/steel pin, steel w/brass pin, steel w/steel pin grease fitting, steel w/brass pin grease fitting, steel w/steel loose pin, and stainless and aluminum w/STS pin. Available in lengths from 1.58-10.27 and heights from 0.37-1.46.



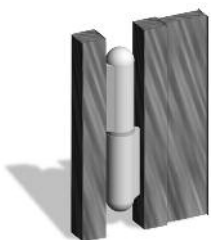
Weld-On Hinges work well in overlapping construction.

Fixed Pin

Removable Pin



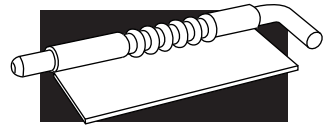
Fixed Pin with Grease Fitting



Weld-On Hinges are well suited in gate construction.

Please visit guden.com for precise availability of parts, dimensions, materials, 2D drawings and 3D CAD models, and associated part numbers.

SPECIALTY HINGES



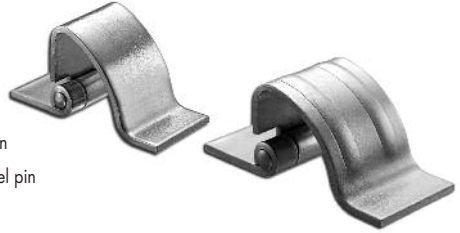
A smooth, almost seamless cabinet surface is now possible with Guden concealed hinges. The radius of the moveable leaf swings the door out and clear of the cabinet frame. Two standard sizes are ready for welded assembly, or can be custom drilled for screw or bolt assembly. Custom sizes are also available.

CONCEALED HINGES

Length	Thickness	Holes	Rib
.80	.075	No	No
1.25	.090	No	Yes

Available in:

- Aluminum w/stainless steel pin
- Stainless steel w/stainless steel pin
- Steel w/steel pin

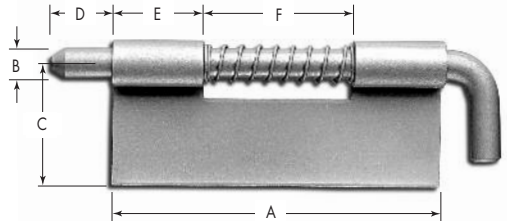


Dual purpose latch hinges make excellent lid or door latches, or easily removable hinges. The spring-loaded, chamfered pin holds securely, whether used as a latch or hinge. They are the answer to door removal.

LATCH HINGES

Holes	Thickness	A	B	C	D	E	F
No	.040	.875	.125	.500	.187	.250	.375
No	.040	1.38	.156	.750	.250	.375	.625
No	.050	2.00	.187	.875	.375	.500	1.00
No	.062	2.75	.250	1.00	.500	.750	1.25

Available in zinc plated steel and stainless steel, with or without holes.



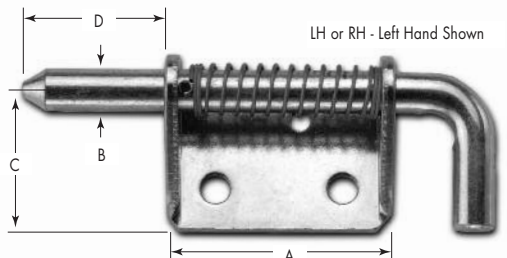
LH or RH - Left Hand Shown

Our heavy duty latch hinge line is available in standard assembly, and with an optional pin hold back feature to lock pin in the retracted position for easier assembly and quick removal of doors.

HEAVY DUTY LATCH HINGES

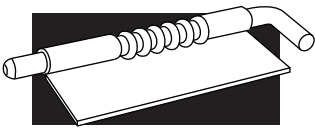
Holes	Thickness	A	B	C	D
Yes	.125	2.00	.375	1.12	1.25
Yes	.187	3.00	.50	1.25	1.50

Available in zinc plated steel and stainless steel.



LH or RH - Left Hand Shown

Please visit guden.com for precise availability of parts, dimensions, materials, 2D drawings and 3D CAD models, and associated part numbers.



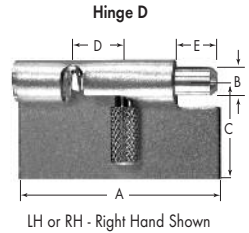
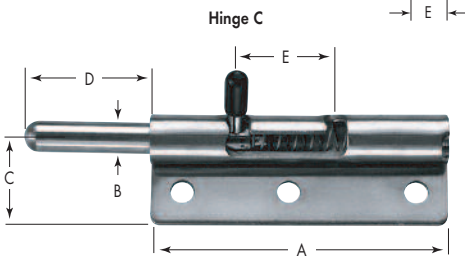
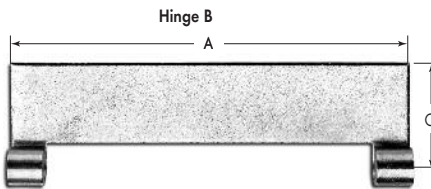
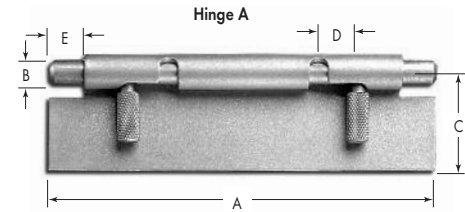
SPECIALTY HINGES

Doors come right off with Guden's un-hinge. It is a quick-release hinge that can be mounted in any position and requires no tools. An easy squeeze of the knurled knobs retracts the spring-loaded pins from the knuckles to release the leaves. Precise manufacturing standards eliminate excess side and end play for minimum door movement.

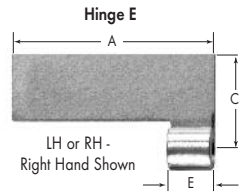
UN-HINGES — STAINLESS STEEL

Hinge	Thickness	A	B	C	D	E	SS	Zinc Plated
A	.050	4.00	.250	1.00	.41	.37	•	
B	.050	4.00	N/A	1.00	N/A	.37	•	
C	.060	3.50	.365	1.00	1.125	1.50		•
D	.050	1.75	.250	1.00	.41	.37	•	•
E	.050	1.75	N/A	1.00	N/A	.37	•	•
F	.050	1.75	.250	1.00	.53	.50	•	
G	.180	2.89	.50	1.00	1.25	1.312	•	

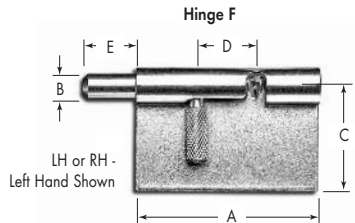
Stocked without holes. Available with holes.



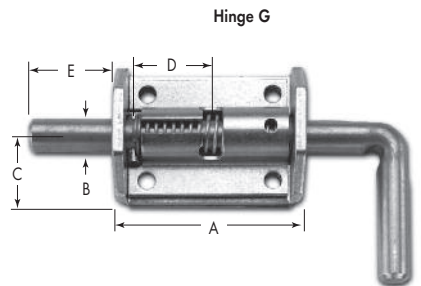
LH or RH - Right Hand Shown



LH or RH - Right Hand Shown



LH or RH - Left Hand Shown



For sizing and mounting information, visit website at guden.com and look for our invisible hinge calculator in the invisible hinge section.

INVISIBLE HINGES

Length	Finish
1.50	04, 26D
2.375	04, 26D
1.50	04, 26D



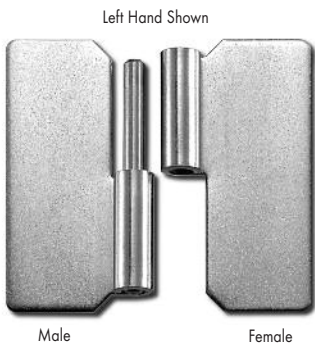
Please visit guden.com for precise availability of parts, dimensions, materials, 2D drawings and 3D CAD models, and associated part numbers.

Quick, easy and economical door removals are the benefits of Guden slip joint hinges. Custom sizes, constructions and hole patterns are also available.

SLIP JOINT HINGES

Length	Leaf Thickness	Pin Diameter	Open Width*						
			1.44	1.68	1.87	2.00	2.50	3.00	
1.50	.050	.120	•						
2.00	.072	.125		•					
	.080	.187		•		•			
2.50	.075	.187			•		•		
	.093	.187					•		
3.00	.093	.187				•			
	.093	.250							•

Available with stainless steel leaf & pin, steel leaf & pin, and aluminum leaf with stainless steel pin, and in some cases a steel leaf with nickel plated pin. *Open width when assembled.

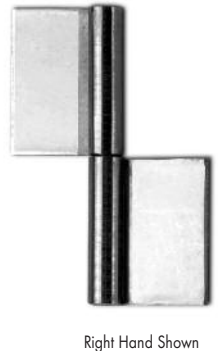
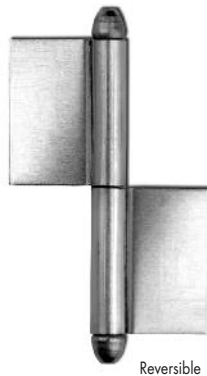
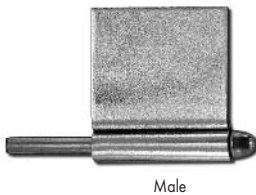


Please visit guden.com for individual drawings with sizes and hole placements.

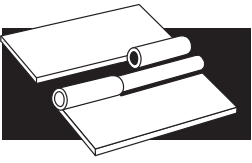
FLAG HINGES

Assembled Length	Leaf Width	Leaf Thickness	Pin Diameter
2.00	.68	.050	.130
	1.00	.050	.120
2.37	1.20	.060	.156

Available in steel and stainless steel.



Please visit guden.com for precise availability of parts, dimensions, materials, 2D drawings and 3D CAD models, and associated part numbers.



SPECIALTY HINGES

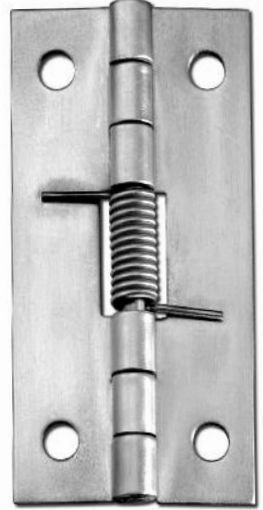
Hold doors open or closed with Guden spring hinges. Butts are carried in stock for either surface or concealed mounting in several sizes, materials and finishes. Custom continuous and butt spring hinges are made to your individual specifications. For more detailed information about dimensions and torques, see our Spring Hinge Design Form at Guden.com.

SPRING HINGES

Length	Leaf Thickness	Pin Diameter	Open Width				
			.75	1.00	1.25	1.50	2.00
1.25	.025	.062	•				
1.75	.035	.086		•			
2.00	.035	.091		•			
	.040	.091		•			
2.18	.050	.115			•		
3.50	.040	.091				•	
3.25	.060	.156				•	
5.00	.050	.120					•
5.375	.060	.156				•	
8.75	.050	.090				•	

Available in steel and stainless steel, open or closed loading, and with or without holes.
Some available in a zinc finish.

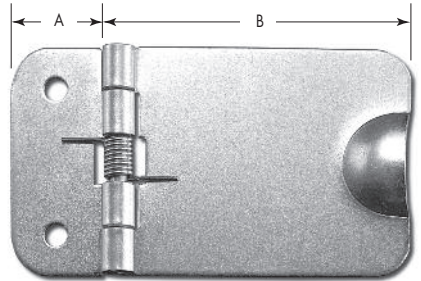
Spring loaded to open shown; for spring loaded to close versions, spring legs are on the opposite side of the leaves



COVER HINGES

Length	Open Width		Leaf Thickness	Pin Diameter
	A	B		
1.562	2.00	.75	.050	.115

Available in steel with a zinc finish. Supplied with two holes.



CABINET SPRING HINGES

Length	Open Width	Leaf Thickness	Pin Diameter
1.11	1.61	.050	.120

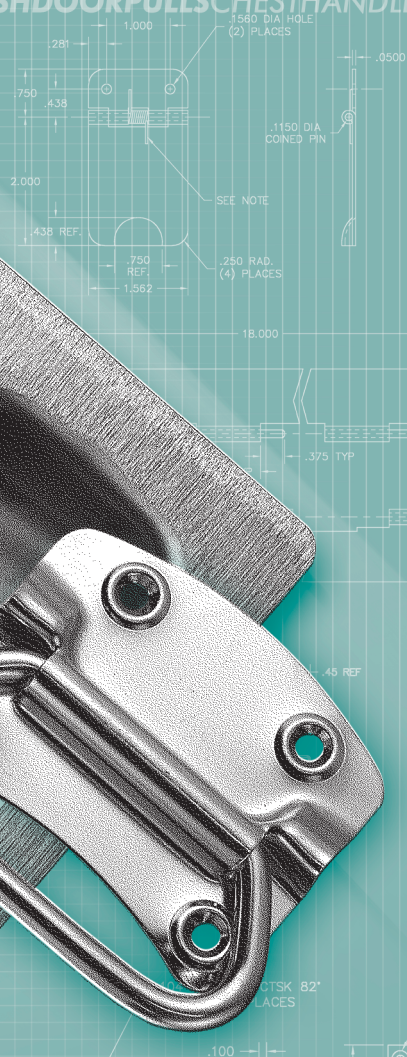
Available in steel with a nickel or brass finish. Supplied with four holes.
Normal loading is open.



Please visit guden.com for precise availability of parts, dimensions, materials, 2D drawings and 3D CAD models, and associated part numbers.

DPULLSDIECASTPULLSSTEELHANDLESKNOBSFLUSHDOORPULLSCHESTHANDLES

Handles & Pulls



CONTENTS

- | | | | |
|----|----------------------------|----|-----------------------------|
| 14 | Rod Pulls | 15 | Flush Door Pulls |
| 14 | Diecast Pulls | 15 | Flush Drawer Pulls |
| 14 | Stainless Steel Pulls | 16 | Chest Handles |
| 14 | Aluminum Pulls | 16 | Steel Cover Chest Handles |
| 15 | Steel Handles | 16 | Spring Loaded Chest Handles |
| 15 | Solid Brass and Zinc Knobs | | |



HANDLES AND PULLS

ROD PULLS



C to C	Projection	Rod Dia.	Tapped
2.50	1.22	.312	8-32
3.00	1.22	.312	8-32
	1.40	.375	8-32
3.50	1.22	.312	8-32
	1.40	.375	8-32
4.00	1.22	.312	8-32
	1.40	.375	8-32
5.00	1.22	.312	8-32
	1.40	.375	8-32

Available in brass, stainless, and aluminum materials. Satin chrome, burnished, and satin anodized finishes.

STAINLESS STEEL PULLS



C to C	Projection	Face	Tapped
4.00	1.31	.625	8-32
5.00	1.31	.625	8-32

Available with satin finish.

DIE CAST PULLS



C to C	Projection	Face	Tapped
3.00	.81	.31	8-32

Available with bright chrome finish.



C to C	Projection	Face	Tapped
2.75	.70	.27	8-32

Available with bright chrome finish.



C to C	Projection	Face	Tapped
4.00	1.00	-	8-32

Available with bright chrome finish.

ALUMINUM PULLS



C to C	Projection	Overall	Tapped
1.00	.87	2.00	8-32
1.50	.87	2.50	8-32
2.50	.87	3.50	8-32
3.50	.87	4.50	8-32
		5.50	8-32

Available with satin anodized finish.

ALUMINUM PULLS



C to C	Projection	Face	Tapped
3.50	.87	.500	8-32
3.00	.87	.500	8-32
2.50	.87	.313	10-24

Available with satin anodized finish.

ALUMINUM PULLS



C to C	Projection	Face	Tapped
3.75	1.00	.375	10-24
4.00	1.06	.437	10-24
5.00	.94	.375	10-24

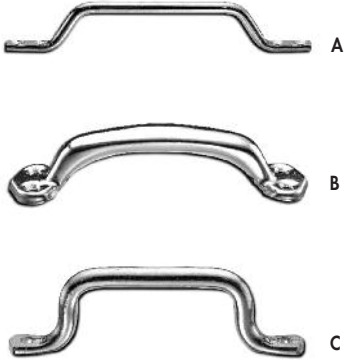
Available with satin anodized finish.

ALUMINUM PULLS



C to C	Projection	Face	Tapped
3.75	1.01	.625	10-24
4.00	1.01	.625	10-24
4.00	1.01	.500	10-24

Available with satin anodized finish.



STEEL HANDLES

Fig.	Overall Length	Projection	Hole Diameter
A	13.00	2.20	1/4-20 ctsk
B	8.31	1.75	#14 ctsk
C	4.68	1.40	.213

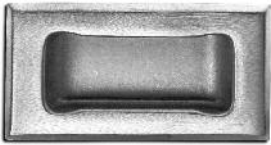
Fig. D available in sizes from 5.00" x 1.25" - 7.75" x 2.25" with zinc, bright chrome, and bright nickel finishes.



SOLID BRASS AND ZINC KNOBS

Available in bright brass, bright chrome, and dull satin finishes.

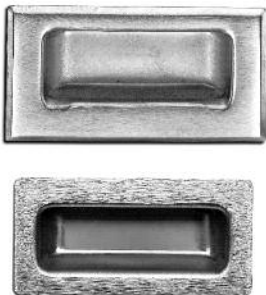
Fig.	Diameter	Tapped
A	.50	10-24
A	.62	10-24
A	.87	10-24
B	1.00	10-24



FLUSH DOOR PULLS

Mounting	C to C	Plate Size
Flat for Spot Welding	-	4.75 x 2.42
Beveled Edge w/ 10-32 Studs	4.00	4.75 x 2.42

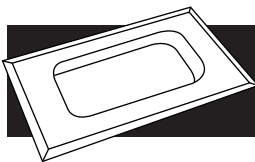
Available in stainless steel with satin finish.



FLUSH DRAWER PULLS

Mounting	C to C	Plate Size
Flat for Spot Welding	-	4.75 x 2.42
Beveled Edge w/ 10-32 Studs	4.00	4.75 x 2.42
Flat for Spot Welding	-	4.00 x 2.00
Beveled Edge w/ 8-32 Studs	3.62	4.00 x 2.00

Available in zinc plated steel and stainless with a satin finish.



HANDLES AND PULLS

CHEST HANDLES

Plate	Width of Bail Inside	Holes
2.68 x 2.00	2.75	3
3.62 x 2.94	3.62	4
4.06 x 3.00	4.12	4
4.88 x 4.19	4.50	4
3.38 x 1.75	3.37	-

Available in zinc plated steel and stainless with a satin finish.



STEEL COVER CHEST HANDLES

Holes	Width of Bail Inside	Inside
.201 or None	3.62 x 1.78	3.75

Available in zinc plated steel.



SPRING LOADED CHEST HANDLES

Plate	Width of Bail Inside
5.12 x 1.62	4.50

Available in steel and nickel plated steel.



SPRING LOADED CHEST HANDLES

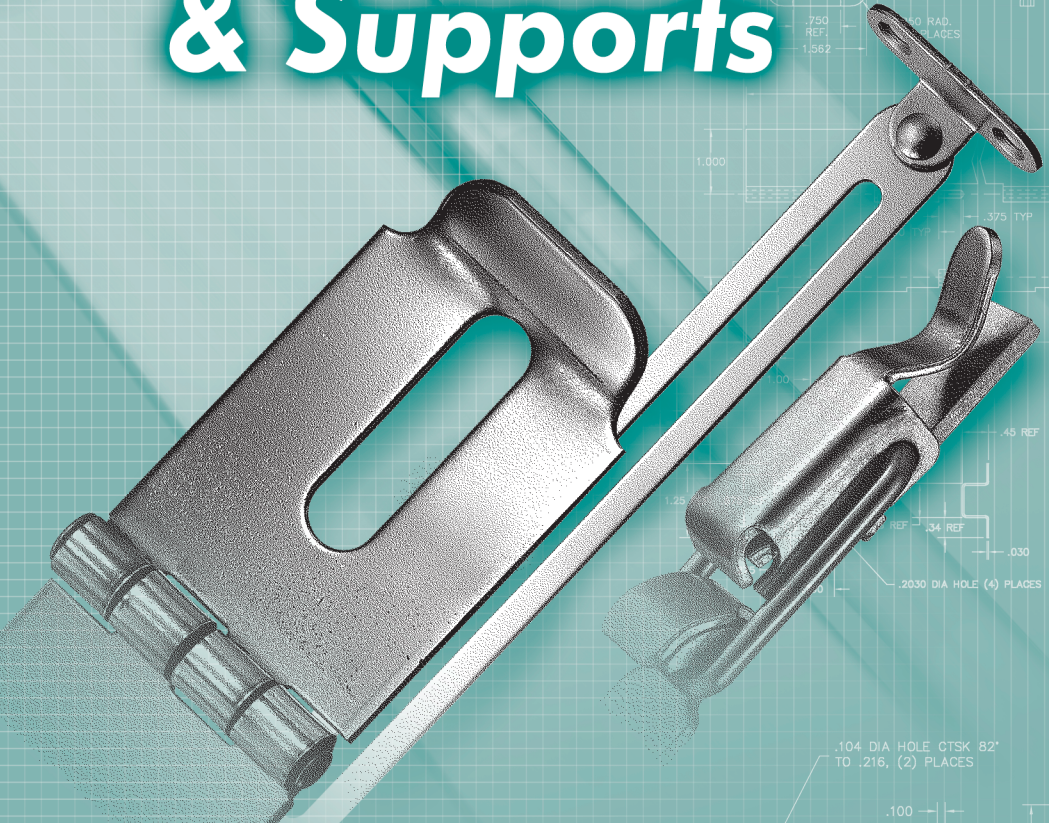
Plate	Width of Bail Inside
5.00 x 2.44	3.75

Available in steel with a nickel finish. Holes are #10 FHS



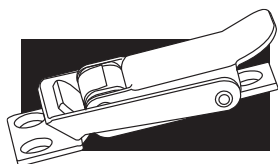
Please visit guden.com for precise availability of parts, dimensions, materials, 2D drawings and 3D CAD models, and associated part numbers.

Catches & Supports



CONTENTS

- | | | | |
|----|----------------------------|----|--------------------------|
| 18 | Compression Spring Catches | 19 | Snap-in Magnetic Catches |
| 18 | Draw Pull Catches | 20 | Reversible Lid Supports |
| 18 | Non-magnetic Catches | 20 | Fall Supports |
| 19 | Hasps & Staples | 20 | Lid Supports |
| 19 | Slam Latches | 20 | Table Leg Supports |



CATCHES, HASPS & STAPLES

COMPRESSION SPRING CATCHES

Overall Length	Max. Width
2.75	1.14
2.42	1.375
3.34	1.82

Available in zinc plated steel or stainless steel.

Available with or without holes.



DRAW PULL CATCHES

Overall Length	Max. Width
2.09	1.06
2.43	1.03
2.25	.93
3.93	1.03
3.81	1.26

Available in zinc plated steel or stainless steel.

Available with or without holes.



NON-MAGNETIC TENSION CATCHES

Material	Length	Width	Projection
Extruded Brass	1.86	.31	.51
Extruded Brass	2.15	.43	.60
Extruded Brass	2.71	.50	.60

Available with satin (dull) brass or satin (dull) chrome finishes.

HASPS & STAPLES*

Slotted Arm Length	Pad Length	Pin Length	Gauge
2.50	1.12	1.00	.072
3.50	1.34	1.50	.077
4.50	2.25	1.50	.089
6.00	2.75	1.88	.107
2.50	1.12	1.00	.072
3.50	1.34	1.50	.077
4.50	2.25	1.50	.089
6.00	2.75	1.88	.107
2.81	0.75	1.12	.060
3.34	1.34	1.50	.077
1.63	.50	1.00	.042
1.88	.63	1.12	.058

Available in electro polished stainless steel, aluminum, and plain steel.

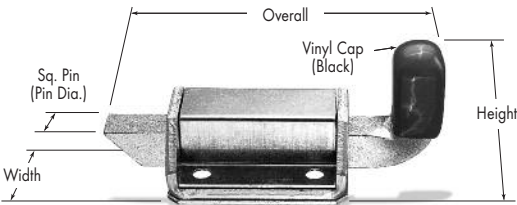
*Hasps and staples are sold separately. Hasp dimensions as shown above and please see our website for dimensions on available staples.



SLAM LATCHES

Overall	Height	Width	Pin
2.870	1.00	1.250	.375
3.750	1.250	1.625	.437
4.875	1.375	2.000	.500

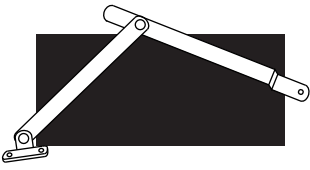
Available in zinc plated steel or passivated stainless steel.



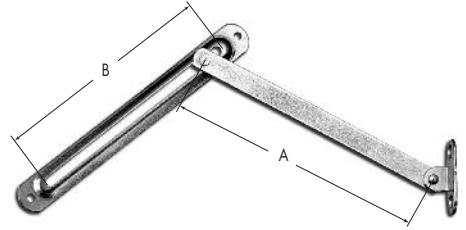
SNAP-IN MAGNETIC CATCHES

Width	Depth	Width of Magnet	No. of Magnets
1.12	.81	.32	1
1.12	.85	.55	2





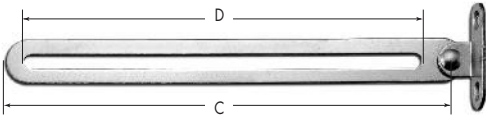
LID SUPPORTS



REVERSIBLE LID SUPPORTS

Arm Length C to C (A)	Thickness	Slotted Arm Length (B)	Thickness
2.50	1.12	1.00	.072

Available with bright nickel finish.

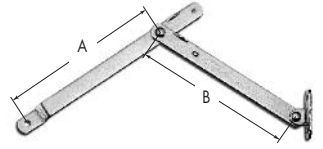
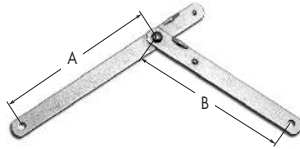


Right Hand Shown

FALL SUPPORTS

Overall Length (C)	Width	Thickness	Slot Length (D)
6.63	.63	.062	5.75
6.22	.63	.062	5.38

Available with bright nickel finish.



LID SUPPORTS

Thickness	Width	A	B
.093	.50	4.88	4.88
.062	.50	4.44	4.44

Available with bright nickel finish.

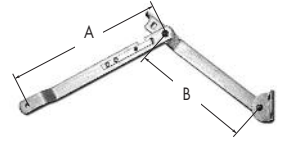
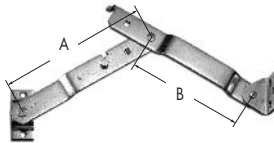


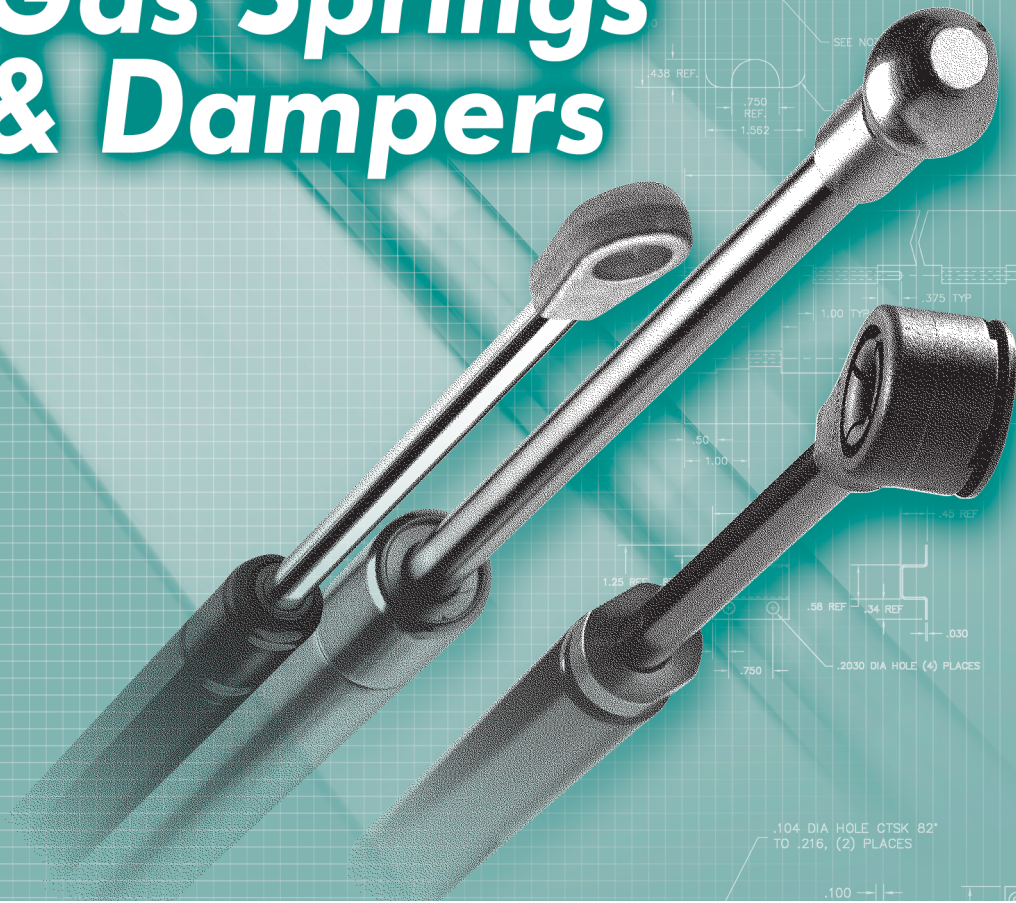
TABLE LEG SUPPORTS

Thickness	Width	A	B
.146	1.25	8.41	6.59
.109	.64	7.05	5.45
.109	.64	7.15	5.40

Available with commercial zinc finish.

Please visit guden.com for precise availability of parts, dimensions, materials, 2D drawings and 3D CAD models, and associated part numbers.

Gas Springs & Dampers



CONTENTS

- | | | | |
|----|--------------------------------------|----|--|
| 22 | GGS Chrome Plated Rod Gas Springs | 24 | End Fittings,
Ball Studs & Clips,
Brackets |
| 23 | GGN Black Nitrate Gas Springs | | |
| 23 | STS-316L Stainless Steel Gas Springs | | |
| 24 | Dampers | | |



GAS SPRINGS AND DAMPERS

GUDEN GAS SPRINGS

WE'VE GOT IT UNDER CONTROL

Whether you want to lift, lower or dampen, Guden Gas Springs will provide the controlled motion you need. These dependable energy storage devices are tough no matter what industrial or commercial arena you put them in.

Built to go the distance, Guden Gas Springs are constructed from high gauge steel to make them highly resistant to bending and buckling.

CUSTOM GAS SPRINGS

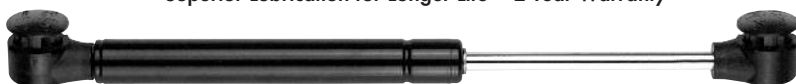
We can supply almost any size or pressure gas spring to suit your application. Damping or double damping can also be incorporated into the gas spring. In addition to our stock end connectors, there are a wide variety of end connectors available on custom order.

APPLICATIONS

From printer covers to hatches and resistance equipment—if the application requires lifting and holding, there's a Guden Gas Spring to do the job.

GGG CHROME PLATED ROD GAS SPRINGS

Superior Lubrication for Longer Life • 2-Year Warranty



Rod Dia. (in.) .315 Tube Dia. (in.) .748

Extended Size (in.)	Compressed Size (in.)	Stroke Size (in.)	Standard End Fittings
9.60	6.35	3.25	K
11.90	8.40	3.50	I, K
15.25	10.25	5.00	I, K
15.27	9.77	5.50	K
17.00	11.00	6.00	I, K
19.63	12.63	7.00	I, K
23.03	14.53	8.50	K

Rod Dia. (in.) .25 Tube Dia. (in.) .591

Extended Size (in.)	Compressed Size (in.)	Stroke Size (in.)	Standard End Fittings
7.50	5.50	2.00	I, K
9.60	6.45	3.15	K
12.00	8.50	3.50	K
14.50	9.50	5.00	K
17.18	11.00	6.18	I, K
19.68	11.68	8.00	K
20.00	11.88	8.12	K

Rod Dia. (in.) .394 Tube Dia. (in.) .866

Extended Size (in.)	Compressed Size (in.)	Stroke Size (in.)	Standard End Fittings
27.80	17.80	10.00	C, I, J, K
26.32	15.85	10.50	K
28.00	16.50	11.50	I
35.30	20.30	15.00	C, J

Notes:

1. The P1 forces and end fittings listed are the standard sizes we normally stock.
2. See page 24 for information on end fittings, ball studs, brackets and clips used for mounting.
3. End threads are 5/16-18 unc.

Standard stock pressures from 20 lbs - 150 lbs.

Please visit guden.com for precise availability of parts, dimensions, materials, 2D drawings and 3D CAD models, and associated part numbers.

GGN BLACK NITRATE ROD GAS SPRINGS

Superior Corrosion Resistance • Attractive "All Black" Appearance
Lower Cost • 2-Year Warranty



Rod Dia. (in.) .315 Tube Dia. (in.) .748

Extended Size (in.)	Compressed Size (in.)	Stroke Size (in.)	Standard End Fittings
9.60	6.35	3.25	K
11.90	8.40	3.50	I, K
15.25	10.25	5.00	I, K
15.27	9.77	5.50	K
17.00	11.00	6.00	I, K
19.63	12.63	7.00	I, K
23.03	14.53	8.50	K

Rod Dia. (in.) .25 Tube Dia. (in.) .591

Extended Size (in.)	Compressed Size (in.)	Stroke Size (in.)	Standard End Fittings
7.50	5.50	2.00	I, K
9.60	6.45	3.15	K
12.00	8.50	3.50	K
14.50	9.50	5.00	K
17.18	11.00	6.18	I, K
19.68	11.68	8.00	K
20.00	11.88	8.12	K

Rod Dia. (in.) .394 Tube Dia. (in.) .866

Extended Size (in.)	Compressed Size (in.)	Stroke Size (in.)	Standard End Fittings
27.80	17.80	10.00	C, I, J, K
26.32	15.85	10.50	K
28.00	16.50	11.50	I
35.30	20.30	15.00	C, J

Notes:

1. The P1 forces and end fittings listed are the standard sizes we normally stock.
2. See page 24 for information on end fittings, ball studs, brackets and clips used for mounting.
3. End threads are 5/16-18 unc.

Standard stock pressures from 20 lbs - 150 lbs.

STS-316L STAINLESS STEEL GAS SPRINGS

The STS-316L is manufactured of 316L stainless steel, which offers increased corrosion resistance for industrial, marine and sterile environments. Our stainless steel gas springs have a polished tube, and a STS rod for corrosion resistance.



Rod Dia. (in.) .394 Tube Dia. (in.) .866

Extended Size (in.)	Compressed Size (in.)	Stroke Size (in.)	Standard End Fittings
27.80	17.80	10.00	C, I, J, K
26.32	15.85	10.50	K
28.00	16.50	11.50	I
35.30	20.30	15.00	C, J

Rod Dia. (in.) .315 Tube Dia. (in.) .748

Extended Size (in.)	Compressed Size (in.)	Stroke Size (in.)	Standard End Fittings
11.90	8.40	3.50	K
15.25	10.25	5.00	K
15.27	9.77	5.50	K
17.00	11.00	6.00	K
18.50	11.25	7.25	K
19.63	12.63	7.00	K
20.00	12.00	8.00	K

Rod Dia. (in.) .24 Tube Dia. (in.) .591

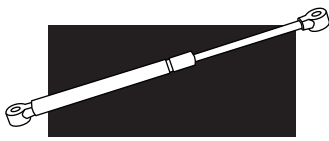
Extended Size (in.)	Compressed Size (in.)	Stroke Size (in.)	Standard End Fittings
7.50	5.50	2.00	K
9.60	6.45	3.15	K
10.00	7.00	3.00	K
12.00	8.50	3.50	K
14.50	9.50	5.00	K
15.00	9.50	5.50	K
17.00	10.25	6.75	K
18.50	11.25	7.25	K
19.68	11.68	8.00	K
20.00	12.00	8.00	K

Notes:

1. The P1 forces and end fittings listed are the standard sizes we normally stock.
2. See page 24 for information on end fittings, ball studs, brackets and clips used for mounting.

Standard stock pressures from 20 lbs - 150 lbs.

Please visit guden.com for precise availability of parts, dimensions, materials, 2D drawings and 3D CAD models, and associated part numbers.



GAS SPRINGS AND DAMPERS

DAMPERS



Dampers are used primarily where a heavy load or door must be lowered or swung in a controlled motion at a constant speed. For example, dampers prevent a door from slamming shut or swinging wildly open.

TWO STANDARD TYPES

Two types of standard dampers are available, depending on the physical position in which they are to be used:

- Compression dampers provide controlled speed in the compressive direction. Compression dampers operate best in the shaft up position so that the internal piston remains in the oil.
- Extension dampers provide controlled speed in the extensive direction. Extension dampers work best in the shaft down position.

SELECTING THE RIGHT DAMPER

As with Guden Gas Springs, size of load, weight of load, direction of motion and location of mounting points determine the correct size.

CUSTOM DAMPERS

We can supply almost any size damper to suit your application. Dampers are available on special order with custom damping rates, and also double damped in both compression and extension.

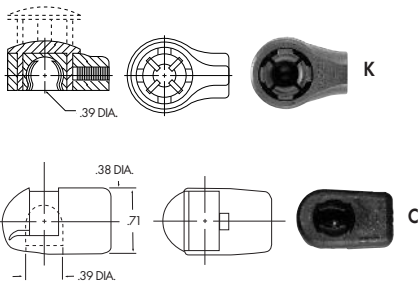
SIZES

Extended Length (Inches)	Stroke (Inches)	Rod Dia. (Inches)	Tube Dia. (Inches)	Minimum Load (lbs.)	Maximum Load (lbs.)
7.89	2	.24	.59	3	50
10.02	3	.24	.59	3	50
12.50	4	.24	.59	3	50
15.02	5	.24	.59	3	50
12.24	4	.315	.87	20	100
14.49	5	.315	.87	20	100
17.01	6	.315	.87	20	100
19.65	7	.315	.87	20	100

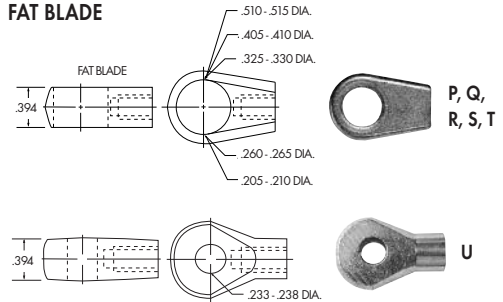
END FITTINGS FOR GAS SPRINGS AND DAMPERS

Details on end connector applications and materials are available from Guden. All end fittings are threaded for M6-1.0-6H thread except the "J" end fitting which is threaded for M8-125-6H. Units are in inches.

NEOPRENE PLASTIC

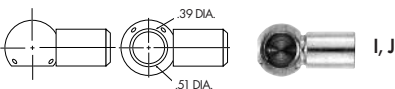


FAT BLADE



STEEL ZINC PLATED

Supplied with safety clip.



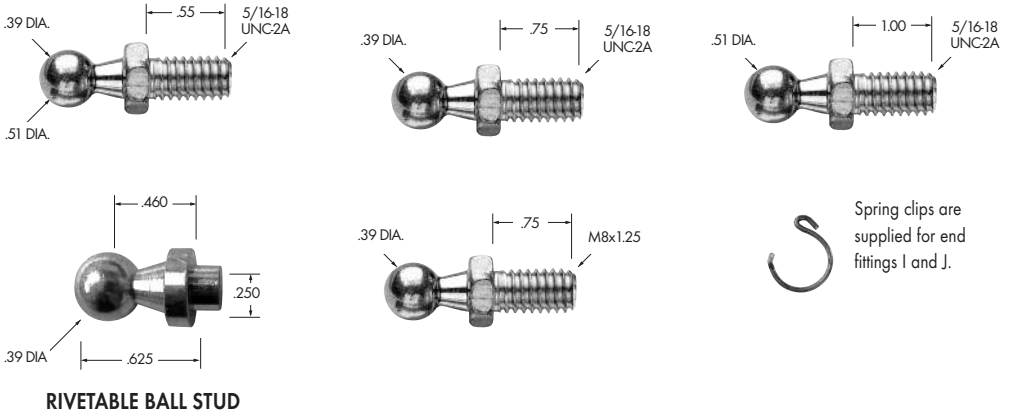
Maximum P1 Pressures:

- "I" end fitting - Max P1=200 lbs.
- "J" end fitting is only available on the .394 rod diameter.
- "K" end fitting - Max P1=150 lbs.
- "C" end fitting - Max P1=250 lbs.
- "P - U" end fittings - Max P1=250lbs.

Please visit guden.com for precise availability of parts, dimensions, materials, 2D drawings and 3D CAD models, and associated part numbers.

BALL STUDS & CLIPS FOR GAS SPRINGS AND DAMPERS

Available in steel with zinc finish and stainless steel.



Spring clips are supplied for end fittings I and J.

BRACKETS for Gas Springs of 90 lbs Pressure and Under

Supplied with a yellow zinc finish. Black powder coat finish also available.



BRACKETS for All Pressures

Supplied with a yellow zinc finish.



Fits with Fat Blade end fittings.

Please visit guden.com for precise availability of parts, dimensions, materials, drawings, and associated part numbers.

SALES TERMS AND CONDITIONS

The products you order from H.A. Guden Co., Inc. will be delivered free from defects in material and workmanship and in accordance with your print specifications. If you experience any problem with any Guden product, please contact your Customer Service Representative for a prompt resolution.

Return policy: If, for any reason, your requirements for a Guden stock inventory item should change, contact your Customer Service Representative. Whether the change is due to a revision of specifications, size, quantity or delivery schedule, Guden will endeavor to accommodate your revisions promptly and courteously.

Credit: Orders will be shipped on an open account basis to firms with a satisfactory credit rating. Firms without a published rating should submit a completed credit reference application. To expedite your initial order, you may request your shipment C.O.D., or send payment in advance until credit can be established.

Terms: Normal payments are due NET 30 DAYS from date of invoice.

Freight: All shipments are F.O.B. our plant in Ronkonkoma, LI, NY. Our shipping department will route via the least costly and most reliable carriers in the event you do not designate one.

For your convenience, we welcome the American Express® Corporate Card, MasterCard, VISA and Discover.



H.A. Guden Co., Inc.

99 Raynor Avenue

Ronkonkoma, NY 11779-6634

800-3-HINGES • 631-737-2900

Fax: 631-737-2933

www.guden.com • info@guden.com